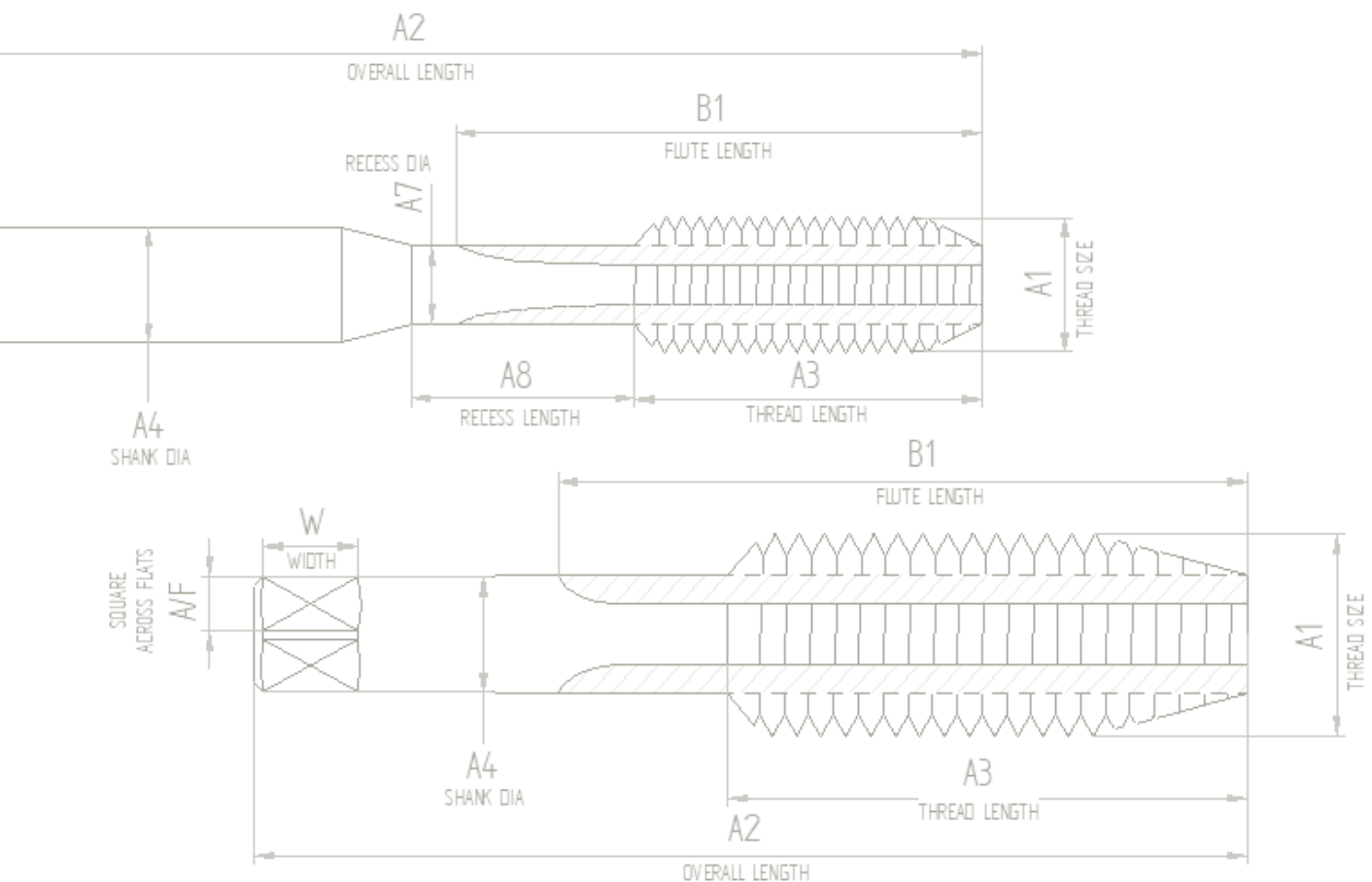


T-TECH

CARBIDE THREAD MILLING CUTTERS STANDARD RANGE

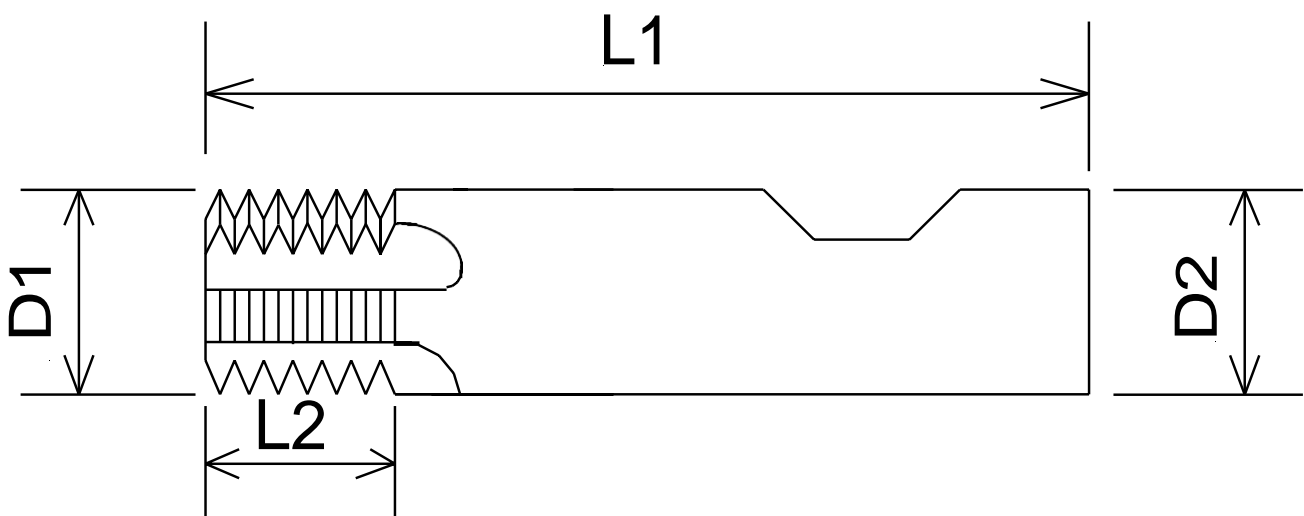


BRITISH STANDARD WHITWORTH; BSP BSW BSF

TOOL CODE	T.P.I.	D1 h10	D2 h6	L1	L2	Z Straight	Z Spiral	B.S.P.	B.S.W.	B.S.F.
CTM-7328WF	28	4.0	6.0	58	8.6	3	3			7/32"
CTM-1828WF	28	8.0	8.0	75	15.9	4	3	1/8"		
CTM-1426WF	26	4.5	6.0	58	10.3	3	3			1/4"
CTM-5622WF	22	6.0	6.0	58	13.2	3	3			5/16"
CTM-1420WF	20	4.5	6.0	58	10.8	3	3		1/4"	
CTM-3820WF	20	7.5	8.0	75	14.6	4	3			3/8"
CTM-1419WF	19	10.0	10.0	80	19.4	4	3	1/4"		
CTM-3819WF	19	12.0	12.0	80	27.4	4	3	3/8"		
CTM-5618WF	18	5.8	6.0	58	13.4	3	3		5/16"	
CTM-7618WF	18	8.5	10.0	80	16.6	4	3			7/16"
CTM-3816WF	16	7.0	8.0	75	15.0	4	3		3/8"	
CTM-1216WF	16	10.0	10.0	80	19.9	4	3			1/2"
CTM-1214WF	14	14.0	14.0	80	28.1	4	4	1/2"-5/8"		
CTM-7614WF	14	8.3	10.0	80	16.6	4	3		7/16"	
CTM-5814WF	14	12.0	12.0	80	23.0	4	3			5/8"
CTM-1212WF	12	9.5	10.0	80	20.0	4	3		1/2"	
CTM-3412WF	12	15.0	16.0	93	30.7	4	4			3/4"
CTM-7811WF	11	16.0	16.0	93	33.6	4	4			7/8"
CTM-5811WF	11	12.0	12.0	80	26.6	4	3		5/8"	
CTM-1211WF	11	16.0	16.0	93	33.6	4	4	1"-2" <		
CTM-3410WF	10	15.0	16.0	93	29.2	4	4		3/4" <	
CTM-1010WF	10	20.0	20.0	100	39.3	6	6			1" <

P.G. 80 DEG CONDUIT

TOOL CODE	T.P.I.	D1 h10	D2 h6	L1	L2	Z Straight	Z Spiral	P.G.
CTM-0720PG	20	7.8	8.0	75	12.0	4	3	7
CTM-0918PG	18	9.8	10.0	80	17.6	4	3	9-16
CTM-2116PG	16	13.8	14.0	80	19.0	4	4	21-48



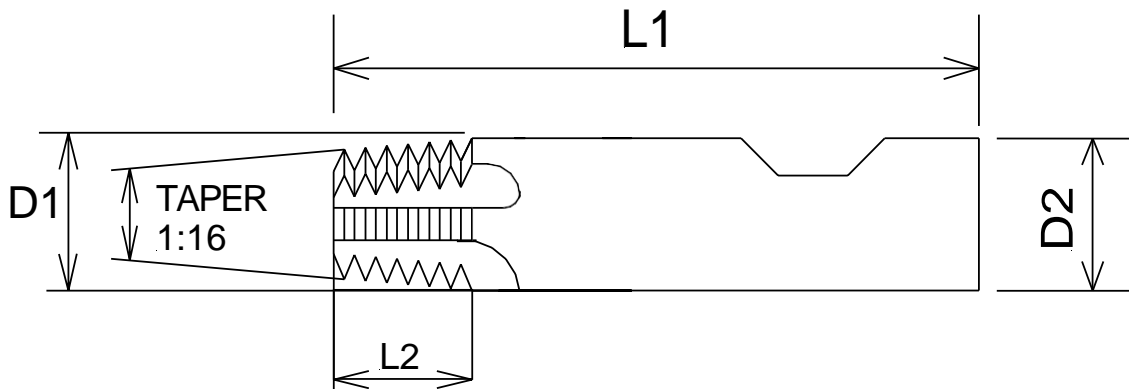
T-TECH TOOLING

STANDARD RANGE CARBIDE THREAD MILLING CUTTERS

NPT								
TOOL CODE	T.P.I.	D1 h10	D2 h6	L1	L2	Z Straight	Z Spiral	N.P.T.
CTM-1627NT	27	5.2	6.0	58	9.6	4	3	1/16"
CTM-1827NT	27	6.9	8.0	64	13.7	4	3	1/8"
CTM-1418NT	19	8.7	10.0	73	17.6	4	3	1/4"-3/8"
CTM-1214NT	14	12.5	14.0	80	21.0	4	4	1/2"-3/4"
CTME-1214NT	14	10.5	12.0	80	21.0	4	4	1/2"-3/4"
CTM-1115NT	11.5	14.1	16.0	93	28.0	4	4	1"-2"
CTM-2128NT	8	17.8	20.0	100	35.0	4	4	4"-8"

NPTF								
TOOL CODE	T.P.I.	D1 h10	D2 h6	L1	L2	Z Straight	Z Spiral	N.P.T.F.
CTM-1627NTF	27	5.2	6.0	58	9.6	4	3	1/16"
CTM-1827NTF	27	6.9	8.0	64	13.7	4	3	1/8"
CTM-1418NTF	19	8.7	10.0	73	17.6	4	3	1/4"-3/8"
CTM-1214NTF	14	12.5	14.0	80	21.0	4	4	1/2"-3/4"
CTM-1115NTF	11.5	14.1	16.0	93	28.0	4	4	1"-2"
CTM-2128NTF	8	17.8	20.0	100	35.0	4	4	4"-8"

BSPT								
TOOL CODE	T.P.I.	D1 h10	D2 h6	L1	L2	Z Straight	Z Spiral	B.S.P.T.
CTM-1828BT	28	6.9	8.0	64	13.7	4	4	1/8"
CTM-1419BT	19	8.7	10.0	73	17.6	4	3	1/4"-3/8"
CTM-1214BT	14	12.5	14.0	80	21.0	4	3	1/2"-3/4"
CTM-1011BT	11	14.1	16.0	93	28.0	4	3	1"-2 1/2"
CTM-4008BT	8	17.8	20.0	100	35.0	4	4	4"-8"

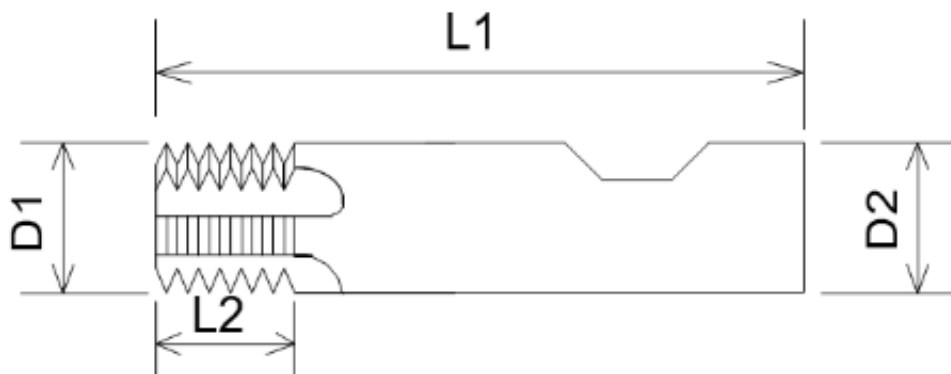


T-TECH TOOLING

STANDARD RANGE CARBIDE THREAD MILLING CUTTERS

UNIFIED (UN) INCL. UNC UNF UNEF

TOOL CODE	T.P.I.	D1 h10	D2 h6	L1	L2	Z Straight	Z Spiral	U.N.C.	U.N.F.	U.N.E.F.
CTM-0640UN	40	2.4	6.0	58	5.3	3	3		No 6	
CTM-0836UN	36	3.0	6.0	58	8.0	3	3		No 8	
CTM-1032UN	32	3.5	6.0	58	8.5	3	3		No 10	
CTM-0632UN	32	2.3	6.0	58	5.3	3	3	No 6		
CTM-0832UN	32	3.0	6.0	58	6.8	3	3	No 8		
CTM-1428UN	28	4.8	6.0	58	12.2	3	3		1/4"	
CTM-5028UN	28	8.0	8.0	75	16.0	4	3			7/16"-1/2"
CTM-1024UN	24	3.2	6.0	58	8.0	3	3	No 10		
CTM-3124UN	24	5.5	6.0	58	13.3	3	3		5/16"	
CTM-1224UN	24	3.8	6.0	58	9.0	3	3	No 12		
CTM-3824UN	24	7.5	8.0	75	15.0	4	3		3/8"	
CTM-5624UN	24	10.0	10.0	80	21.7	4	3			9/16"-11/16"
CTM-1420UN	20	4.4	6.0	58	10.8	3	3	1/4"		
CTM-1220UN	20	8.0	8.0	75	16.0	4	3		1/2"	
CTM-3420UN	20	12.0	12.0	80	28.6	4	3			3/4"-1" <
CTM-3118UN	18	5.8	6.0	58	12.0	3	3	5/16"		
CTM-5818UN	18	10.0	10.0	80	23.3	4	3		5/8"	
CTM-3816UN	16	7.2	8.0	75	15.0	4	3	3/8"		
CTM-1016UN	16	10.0	10.0	80	22.0	4	3			
CTM-3416UN	16	12.0	12.0	80	28.9	4	3		3/4"	
CTM-4314UN	14	8.0	8.0	75	17.2	4	3	7/16"		
CTM-1014UN	14	10.0	10.0	80	20.0	4	3			
CTM-7814UN	14	14.0	14.0	80	29.7	4	4		7/8"	
CTM-1213UN	13	9.5	10.0	80	20.5	4	3	1/2"		
CTM-1012UN	12	16.0	16.0	93	35.0	4	4		1" <	
CTM-5811UN	11	12.0	12.0	80	29.0	4	3	5/8"		
CTM-3410UN	10	14.0	14.0	80	29.0	4	4	3/4"		
CTM-7809UN	9	16.0	16.0	93	32.4	4	4	7/8"		
CTM-1008UN	8	20.0	20.0	100	39.7	4	4	1"		
CTM-1257UN	7	25.0	25.0	120	49.0	6	6	1 1/4"		
CTM-1386UN	6	25.0	25.0	120	48.7	6	6	1 3/8" <		
CTMR-2512UN	12	25.4	20.0	135	40.0*	6	6	12 UN SERIES		
CTMR-2548UN	8	25.4	20.0	135	40.0*	6	6	8 UN SERIES		



T-TECH TOOLING

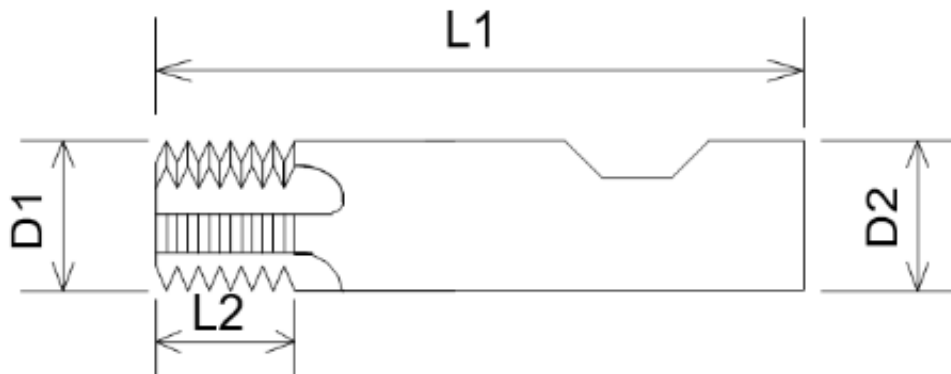
STANDARD RANGE CARBIDE THREAD MILLING CUTTERS

ISO METRIC

TOOL CODE	PITCH	D1 h10	D2 h6	L1	L2	Z Straight	Z Spiral	COARSE	FINE
CTM-3005MM	0.50	2.3	6.0	58	5.3	3	3	M3	-
CTM-5005MM	0.50	4.0	6.0	58	8.3	3	3	-	MF5
CTM-3506MM	0.60	2.6	6.0	58	6.3	3	3	M3,5	-
CTM-4007MM	0.70	2.9	6.0	58	7.3	3	3	M4	-
CTM-4575MM	0.75	3.3	6.0	58	8.6	3	3	M4,5	-
CTM-6075MM	0.75	4.5	6.0	58	9.4	4	3	-	MF6
CTM-5008MM	0.80	3.8	6.0	58	9.2	3	3	M5	-
CTM-6010MM	1.00	4.5	6.0	58	10.5	4	3	M6	-
CTM-8010MM	1.00	6.0	6.0	58	15.5	4	3	-	MF8
CTM-1010MM	1.00	10.0	10.0	80	21.5	4	3	-	-
CTM-8125MM	1.25	6.0	6.0	58	13.2	4	3	M8	-
CTM-1125MM	1.25	8.0	8.0	75	15.6	4	3	-	MF10
CTM-1015MM	1.50	7.8	8.0	75	15.7	4	3	M10	-
CTM-1415MM	1.50	10.0	10.0	80	21.8	4	3	-	MF14
CTM-1615MM	1.50	12.0	12.0	80	29.3	4	4	-	MF16 <
CTM-2175MM	1.75	9.5	10.0	80	20.2	4	3	M12	-
CTM-1420MM	2.00	11.0	12.0	80	23.0	4	3	M14	-
CTM-1620MM	2.00	12.0	12.0	80	29.0	4	4	M16	-
CTM-1825MM	2.50	14.0	14.0	80	28.8	4	4	M18	-
CTM-2430MM	3.00	19.0	20.0	100	37.5	4	4	M24	-
CTM-3035MM	3.50	24.0	25.0	120	47.3	6	6	M30	-
CTMR-2535MM	3.50	25.4	20.0	135	40.0	6	6	M33	-
CTMR-2540MM	4.00	25.4	20.0	135	40.0	6	6	M36	-
CTMR-2520MM	2.00	25.4	20.0	135	40.0	6	6	2.00 SERIES	-
CTMR-2530MM	3.00	25.4	20.0	135	40.0	6	6	3.00 SERIES	-

NPSF

TOOL CODE	T.P.I.	D1 h10	D2 h6	L1	L2	Z Straight	Z Spiral	N.P.S.F.
CTM-1627N	27	5.6	6.0	58	9.6	3	3	1/16"-1/8"
CTM-1418N	18	9.8	10.0	80	17.6	4	3	1/4"-3/8"
CTM-1214N	14	13.8	14.0	80	28.0	4	4	1/2"-3/4"



T-TECH TOOLING

STANDARD RANGE CARBIDE THREAD MILLING CUTTERS